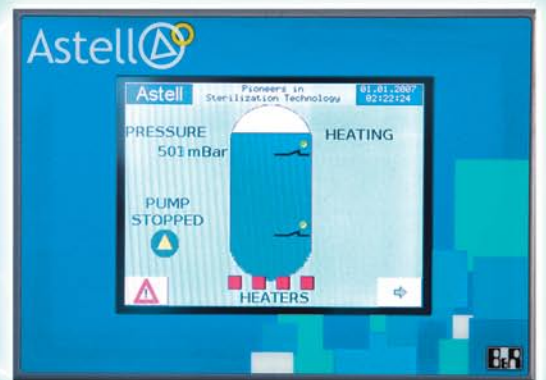




Pioneers in Sterilization Technology

Steam Generators

48 / 72 / 96 kW



STEAM GENERATORS – 48 / 72 / 96 KW

Astell manufacture a wide range of steam generators for use either with our autoclaves and sterilizers, or for direct steam supply in the pharmaceutical, medical, food & beverage industries etc.



- Electrically Heated Steam Generators
- Clean Steam Generators
- Steam to Steam Generators
- TouchScreen PLC Controlled
- Designed with Storage Capacity
- Stainless Steel Pressure Vessel
- Stainless Steel Pipework
- Fill Tank
- High / Low Water
- Over Temp cut out
- Over Pressure cut-out
- Upgradeable to higher power
- Float Switch Level Control (water)
- Easy to maintain
- Low power standby
- Optional Stainless Steel Panelwork
- Optional Sight Glass



Astell Steam Generators are designed with peak demand in mind making them ideal for steam sterilizers or other systems that require instant steam in short, high demand systems.

Stainless steel boilers and pipework reduce contamination caused by mild steel systems.

Water Capacity	294 L
Working Water Level	168 L
Max. Working Pressure	7 bar
Safety Valve Outlet	1600mm DN35
Blowdown Outlet	150 mm DN15
Water Feed	150mm DN15
Overflow	150 mm DN25
Steam out	1950 mm DN28

Fully programmable via the LogiColour Touch Screen controller, giving constant information regarding:

- Pressure Vessel Status
- Pressure / Water Level
- Pump Status
- Time / Date
- Pump Status / Running / Tripped
- Low water alarm
- Programmable working pressure
- Graphical display of water level and steam pressure



The password protected control system allows instant access, including manual control and full override.

All Astell Steam Generators are controlled via the LogiColour TouchScreen controller.

Reference	Rating	Power Supply Phase ø Amps/Phase kW Total	H (mm)	W (mm)	D (mm)	Heaters
STG048	48kW	3 phase + N & Earth 48kW	2000	800	1150	2
STG072	72kW	3 phase + N & Earth 72kW	2000	800	1150	3
STG096	96kW	3 phase + N & Earth 96kW	2000	800	1150	4