

**INSTALLATION CONNECTION DETAILS**

**ELECTRICAL CONNECTION:-**

Consult Instruction manual and machine voltage rating plate before attempting installation.

**MAINS WATER INLET (Autofill/Water Cooling Options):-**

This is a blue plastic hose with a 3/4" BSP female tap connector must be connected to a cold water supply 2 - 6 Bar, 4L/min minimum. This supply must be supplied with a shut-off valve & have a max flow rate of 20 Litres/minute. Max Temp. 25°C.

**CHAMBER DRAIN:-**

For cleaning purposes only (1/2" BSP).  
May be connected to building drain if required.  
Must be kept closed when autoclave is hot or pressurised.

**CHAMBER EXHAUST:-**

Ø35mm Carrying steam and condensate. Must be connected to building drain, vented to external atmosphere or extraction hood.

**BUILDING DRAIN:-**

Free venting, non-manifolded drain (min. Ø50mm) capable of withstanding temperatures up to 100°C & have a downward slope of at least 1 in 50.

**CHAMBER/JACKET SAFETY VALVE OUTLETS:-**

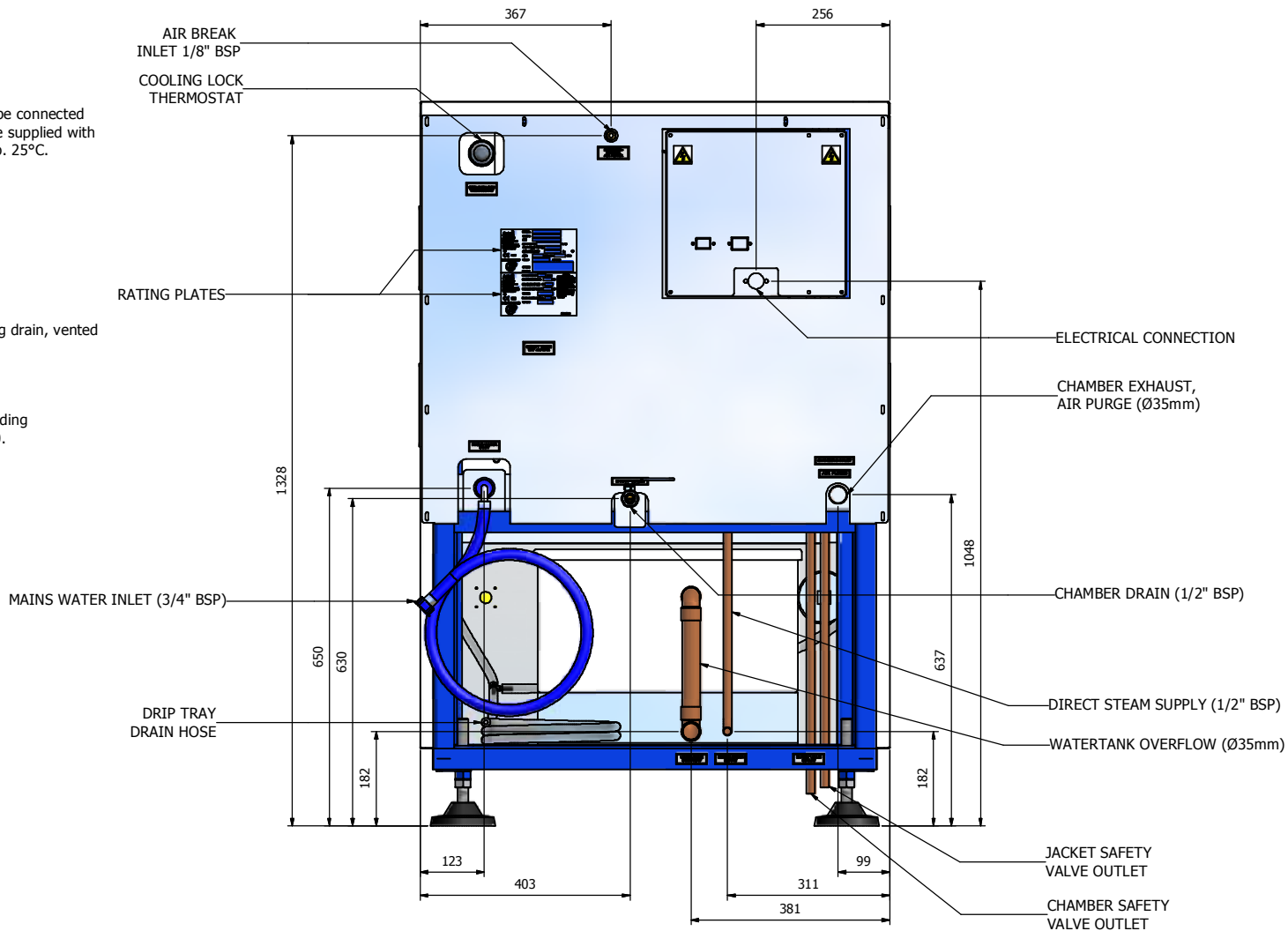
These exhaust vertically down close to the floor.  
They may not be connected to any other pipework.

**WATER TANK OVERFLOW (Autofill Models):-**


Ø35mm Can be fed to an open drain.

**DIRECT STEAM SUPPLY (ASB292NT):-**

A supply of dry saturated steam is required at 4 Bar.  
1/2" BSP connection.



REV	DESCRIPTION	M.R. No:	DATE
1	Original Issue	-	09/11/2007

 Astell Scientific Ltd 19-21 Powerscroft Road, Sidcup, Kent, DA14 5DT Tel. 020 8300 4311 Fax. 020 8300 2247 www.astell.com	DRG No: <b>999-368</b>	TITLE: <b>ASB290/292NT - SPECIFICATION</b>			
	DRAWN BY: BP	DATE: 09/11/2007	SCALE: ~	TOLERANCE: ~	PART No: / STOCK No:
	CHECKED BY: HAT	DATE: 09/11/2007	MATERIAL/THICKNESS: ~		UNLESS STATED OTHERWISE DIMENSIONS IN <b>MM</b>
	APPD BY: HAT	DATE: 09/11/2007	PAIN/FINISH: ~	SHEET: 2/2	SHEET SIZE: A2