

INSTALLATION CONNECTION DETAILS

ELECTRICAL CONNECTION:-

Consult Instruction manual and machine voltage rating plate before attempting installation

MAINS WATER INLET:-

This is a blue plastic hose with a 3/4" BSP female tap connector must be connected to a cold water supply, 2 - 6 Bar, 4L/min minimum. This supply must be supplied with a shut-off valve & have a max flow rate of 20 Litres/minute. Max Temp. 25°C

CHAMBER DRAIN:-

For cleaning purposes only. May be connected to building drain if required. Must be kept closed when autoclave is hot or pressurised.

CHAMBER EXHAUST:-

Ø35mm Carrying steam and condensate. Must be connected to building drain and vented to external atmosphere or extraction hood.

BUILDING DRAIN:-

Free venting, non-manifolded drain (min. Ø50mm) capable of withstanding 100°C & have a downward slope of at least 1 in 50.

SAFETY VALVE OUTLET:-

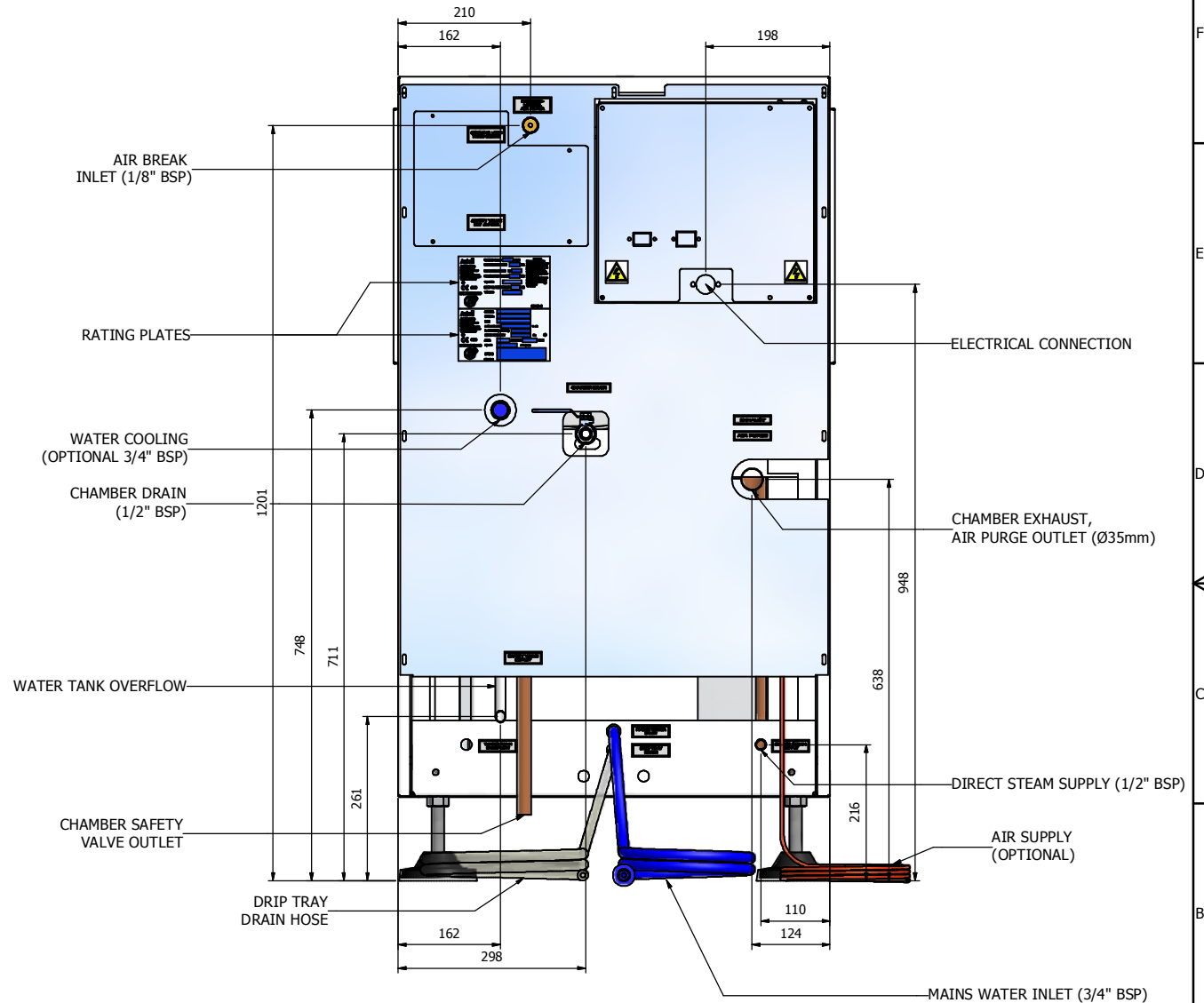
This exhausts vertically down close to the floor. It may not be connected to any other pipework.

WATER TANK OVERFLOW/WARNING PIPE:-


Must be visible to operator. White polypropylene pipe can be fed to an open tundish or an open drain.

DIRECT STEAM SUPPLY (ASB262NT):-

A supply of dry saturated steam is required at 4 Bar. 1/2" BSP connection.



REV	DESCRIPTION	M.R. No:	DATE
1	Original Issue	-	18/10/2007

 <p>Astell Scientific Ltd 19-21 Powerscroft Road, Sidcup, Kent, DA14 5DT Tel. 020 8300 4311 Fax. 020 8300 2247 www.astell.com</p>	DRG No: 999-364	TITLE: ASB260/262NT - SPECIFICATION			
	DRAWN BY: BP	DATE: 18/10/2007	SCALE:	TOLERANCE:	PART No:
CHECKED BY: HAT	DATE: 13/11/2007	MATERIAL/THICKNESS:		UNLESS STATED OTHERWISE DIMENSIONS IN MM	
APPD BY: HAT	DATE: 13/11/2007	PAINT/FINISH:		SHEET: 2/2	SHEET SIZE: A2