

CONNECTION INFORMATION

EXHAUST,
CONDENSATE
& AIR PURGE
OUTLET: -

THIS MAY BE PLUMBED TO A TUNDISH
OR SUITABLE BUILDING DRAIN CAPABLE
OF WITHSTANDING 60°C & HAVE A
DOWNWARD SLOPE OF AT LEAST 1 IN 50

SAFETY VALVE
OUTLET: -

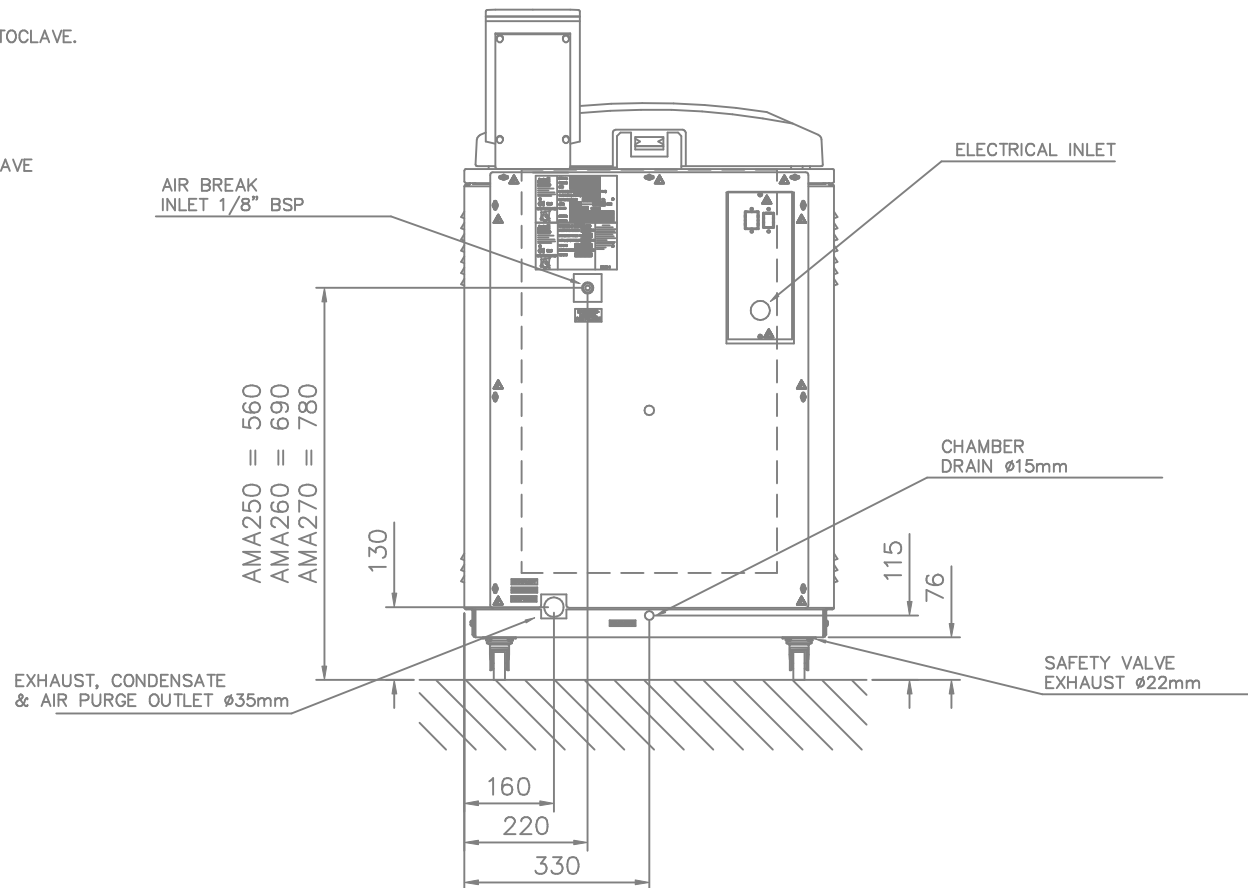
THIS EXHAUSTS VERTICALLY DOWN
CLOSE TO THE FLOOR UNDER THE AUTOCLAVE.
IT MAY NOT BE CONNECTED TO
ANY OTHER PIPEWORK

CHAMBER DRAIN: -

THIS MAY BE PLUMBED TO A DRAIN
OR TUNDISH.
MUST BE KEPT CLOSED WHEN AUTOCLAVE
IS HOT OR PRESSURISED.

ELECTRICAL
CONNECTION: -

CONSULT INSTRUCTION MANUAL AND
MACHINE VOLTAGE RATING PLATE
BEFORE ATTEMPTING INSTALLATION



1	06/08/04	Original Issue	-
-	-	-	-
-	-	-	-
-	-	-	-

ISS No.	DATE	MODIFICATION	MOD REQ No.
DRAWN BY HAT	DATE 06/08/04	JOB No.	SCALE 1:10
CHECKED BY HAT	DATE 06/08/04	STORES PART No. -	TOLERANCES -
ISSUED BY HAT	DATE 06/08/04	DERIVED FROM 327-016	PAINT/FINISH -

MATERIAL	STOCK No.	QUANTITY/AREA
-	-	-
-	-	-
-	-	-
-	-	-

Astell

Powerscroft Road
Sidcup Kent
DA14 5DT
Tel. 020 8300 4311
Fax. 020 8300 2247
http://www.astell.com

